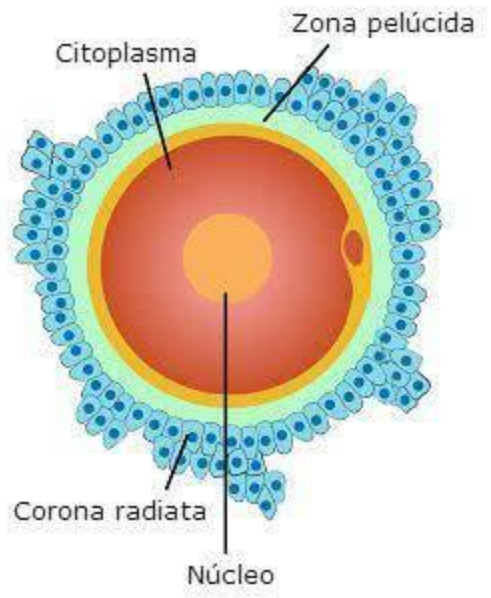
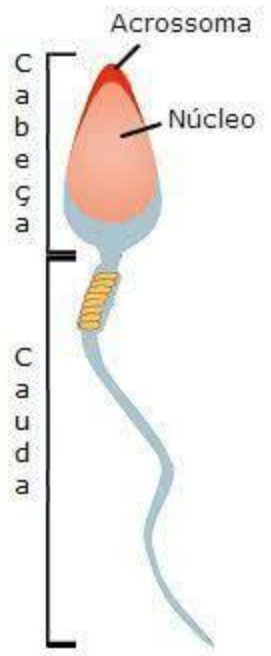


# **Desenvolvimento Embrionário**

**ESPERMATOZOIDE**

**ÓVULO**

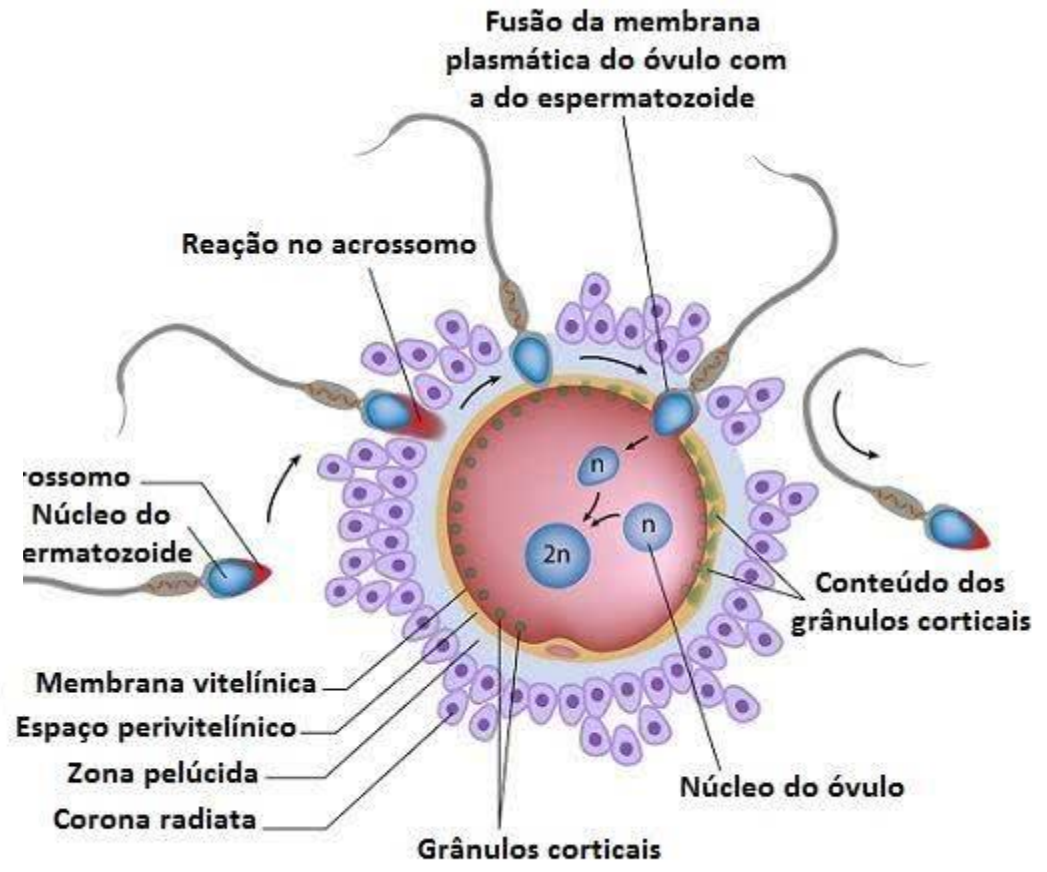


**(n)**

**(n)**

**MEIOSE**

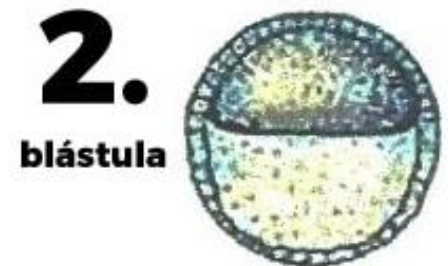
# Fecundação



**MITOSE**

# Fases do Desenvolvimento Embrionário

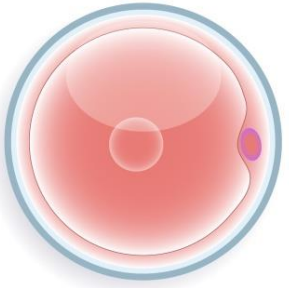
- Segmentação
- Gastrulação
- Organogênese



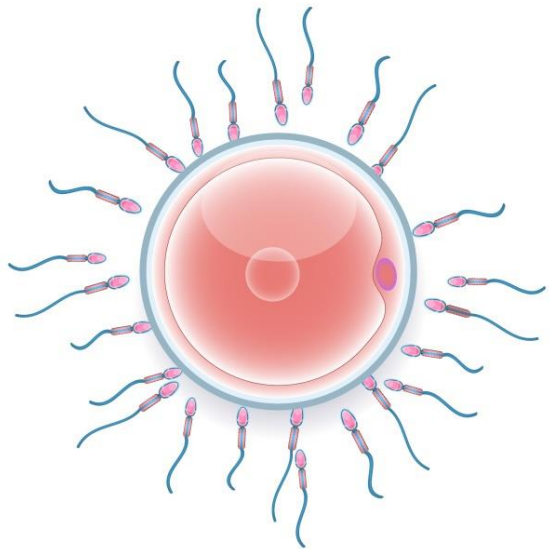
# Segmentação

Começa a sofrer clivagem

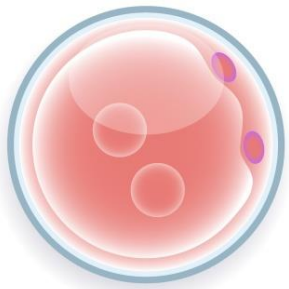
Ovócito II



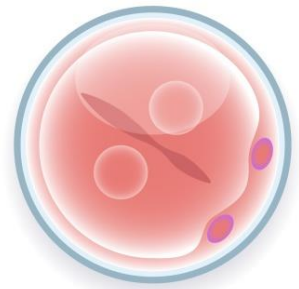
Fertilização



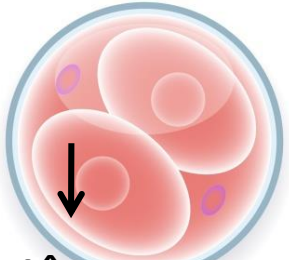
Zigoto



Mitose

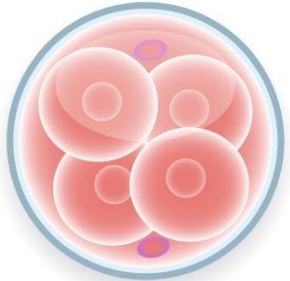


Estágio de 2 células

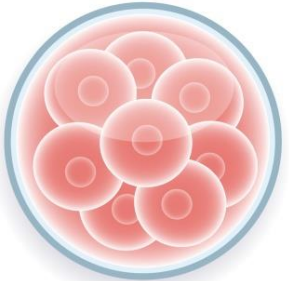


Blastômeros

Estágio de 4 células



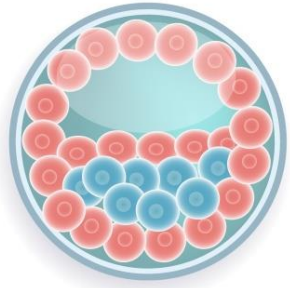
Estágio de 8 células



Mórula



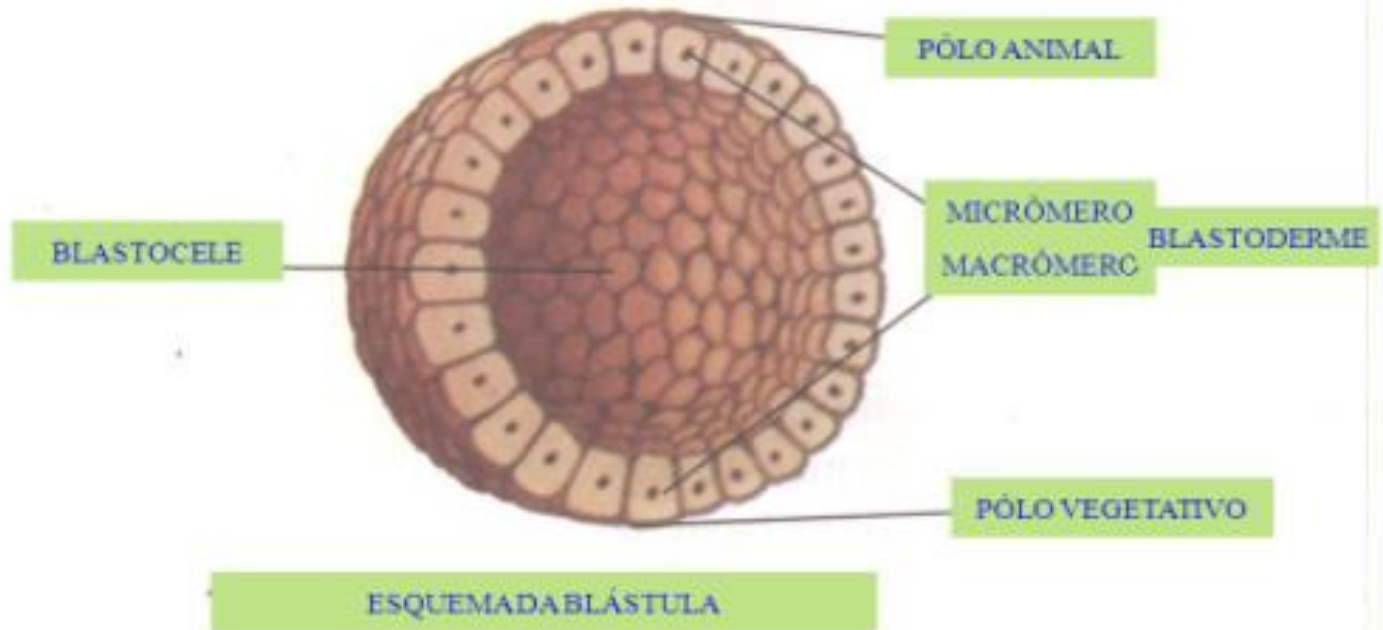
Blastocisto



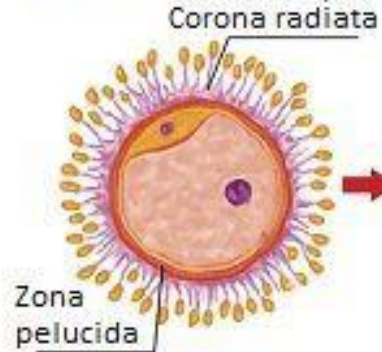


Mórula

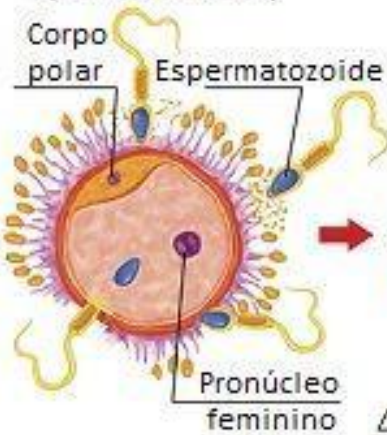
Blástula



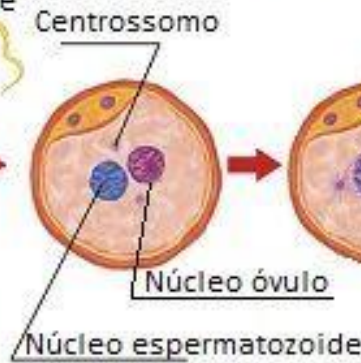
Período pós-ovulatório  
(entre dias 9 e 16  
do ciclo menstrual)



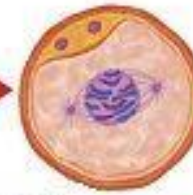
Fertilização  
(dentro de 24h)



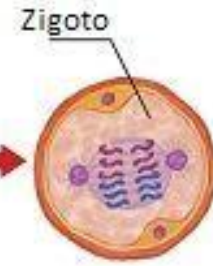
Formação  
do zigoto



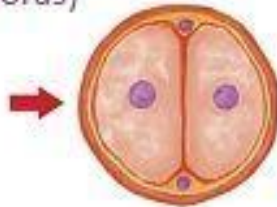
Cariogamia  
(união dos  
pronúcleos)



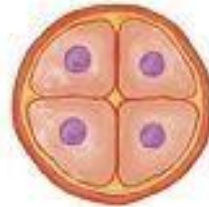
Primeira  
Clivagem



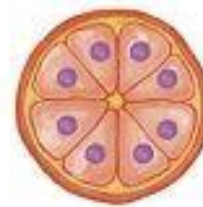
Estágio de 2 Células  
(36 horas)



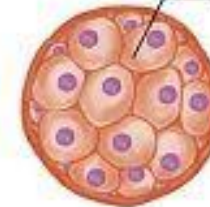
4 células  
(48 horas)



8 células  
(60 horas)



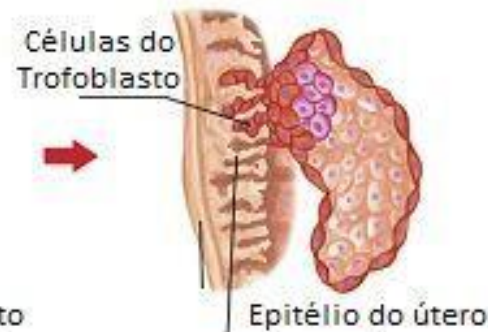
16-32 células  
(72 horas)



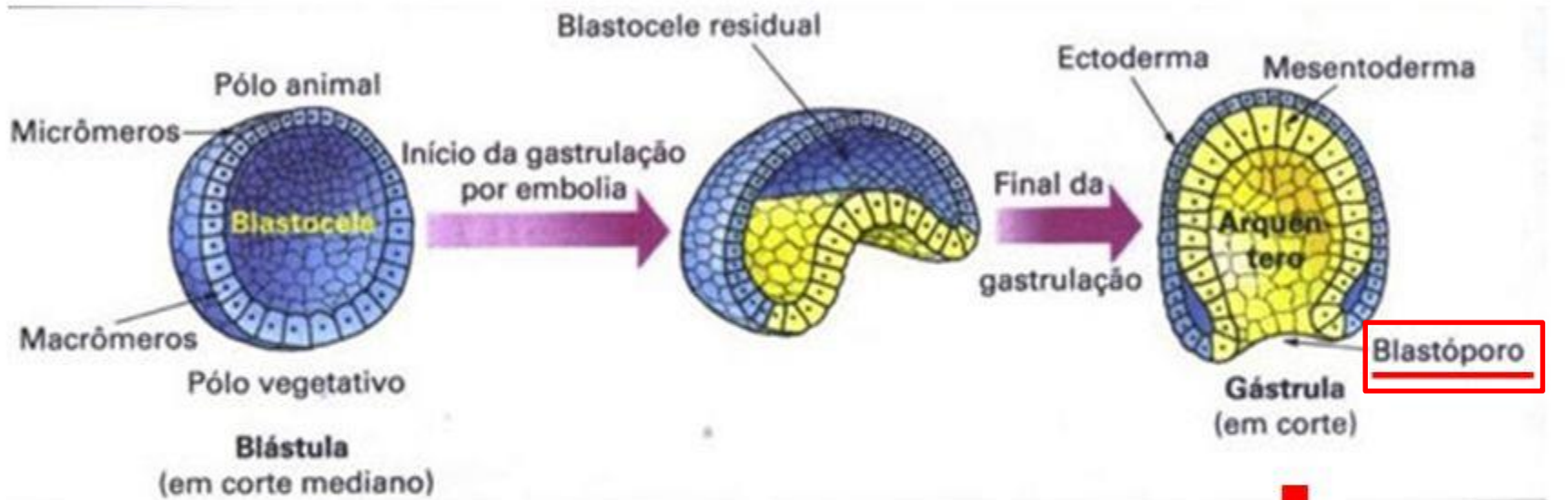
Formação da massa celular  
interna (4 a 5 dias)



Nidação (8 a 14 dias)

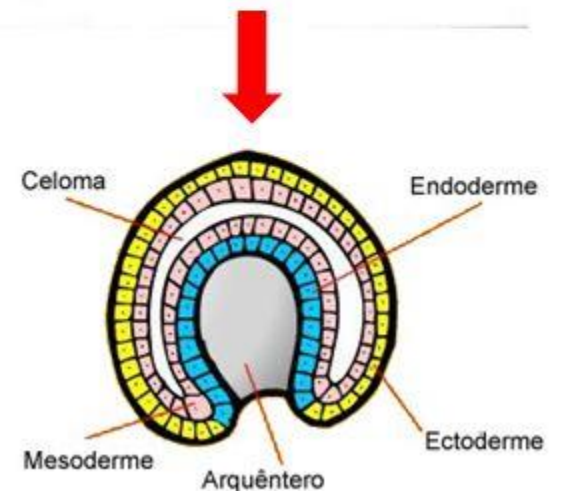


# GASTRULAÇÃO



Mesentoderme → Mesoderme e Endoderme

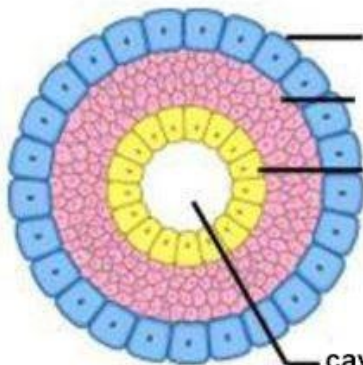
Arquêntero: Intestino Primitivo



# Folhetos Embrionários



## Diblástico

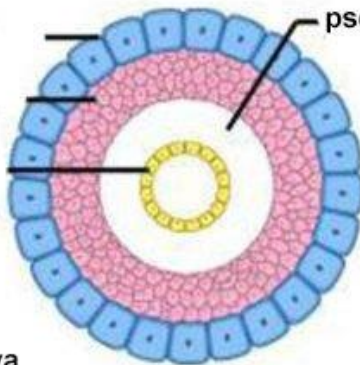


a. Acelomados

ectoderma  
mesoderma  
endoderma

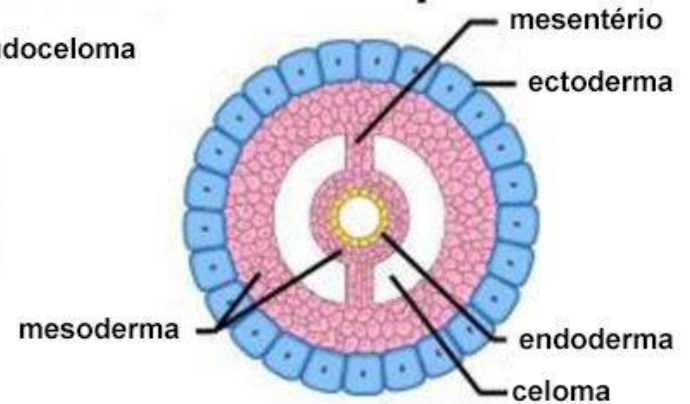
cavidade digestiva

## Triblástico



b. Pseudocelomados

pseudoceloma



c. Celomados

mesentério

ectoderma

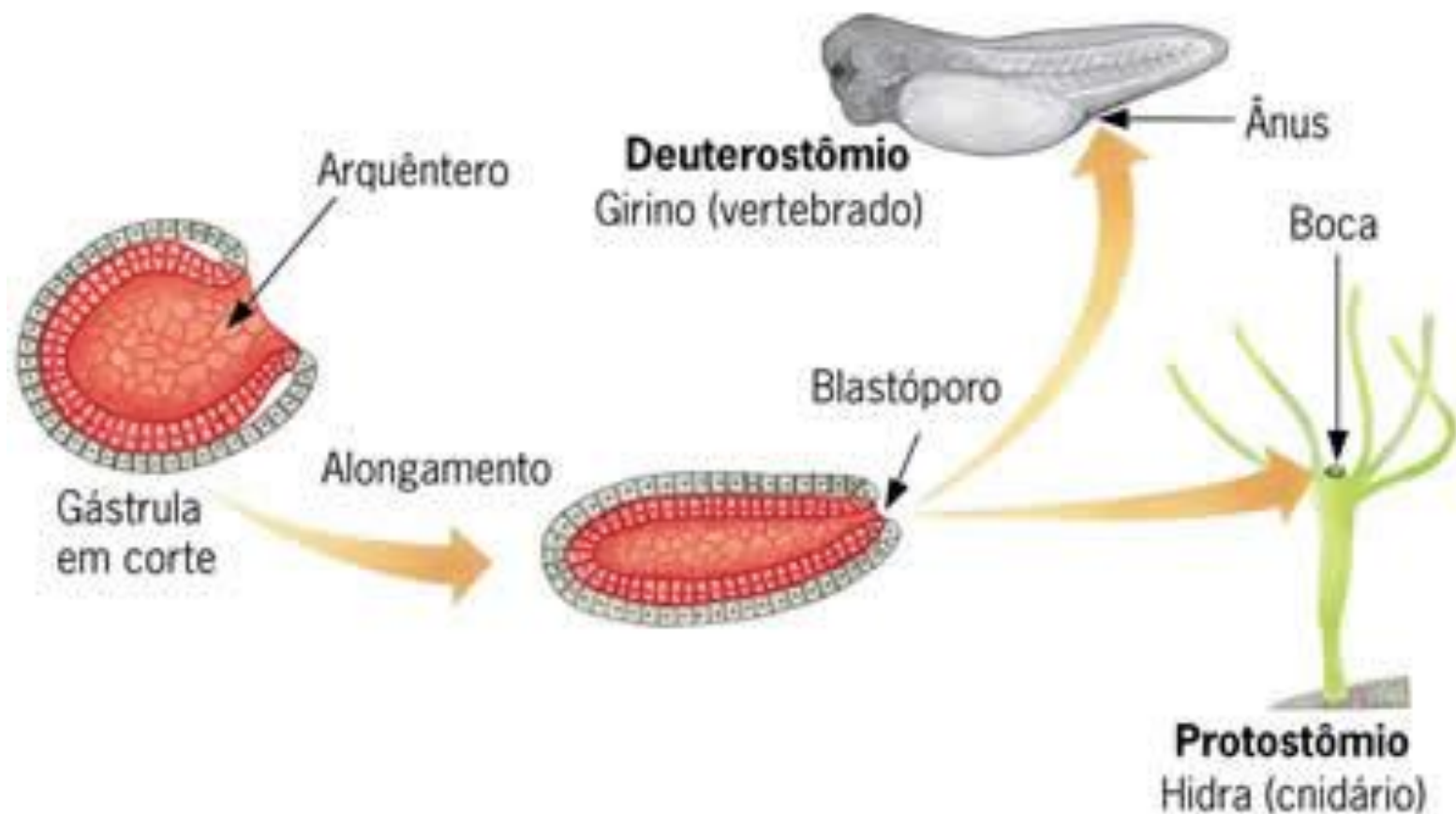
endoderma

celoma

mesoderma

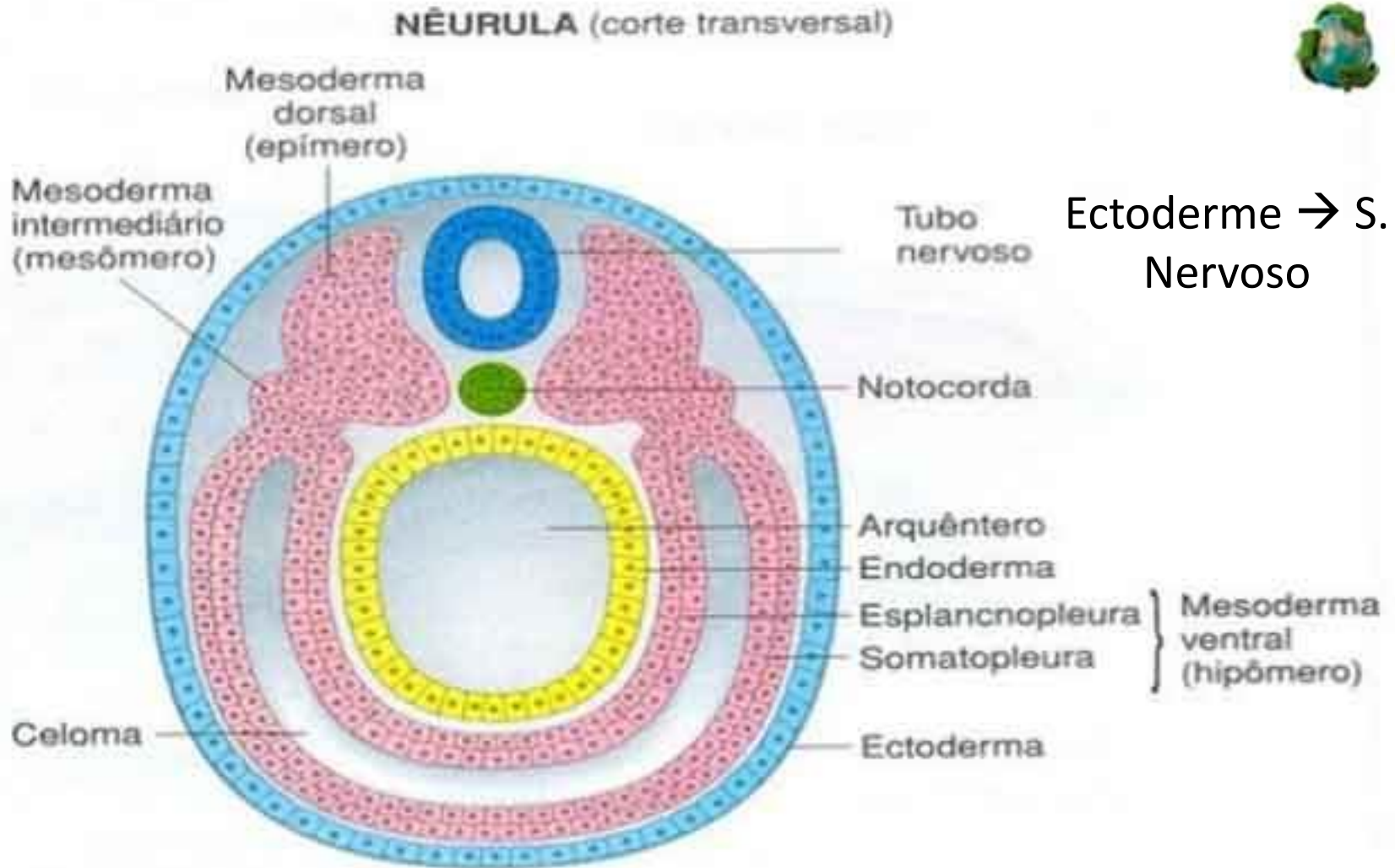


## Protostômios e deuterostômios



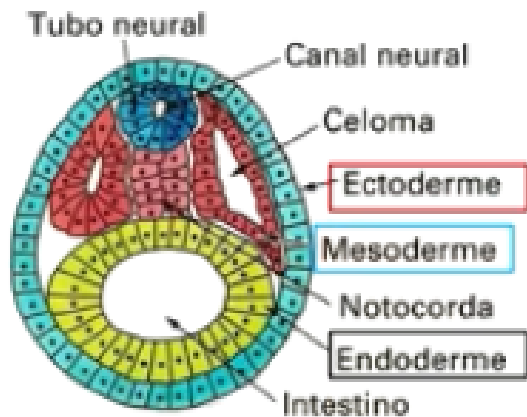
# Organogênese

Formação dos tecidos e dos órgãos!



## FOLHETOS GERMINATIVOS OU EMBRIONÁRIOS

Lâminas celulares que na organogênese darão origem aos tecidos e órgãos.



ECTODERME	MESODERME	ENDODERME
Folheto mais <i>externo</i>	Situa-se entre a ectoderme e a endoderme	Folheto mais <i>interno</i>
<ul style="list-style-type: none"><li>• Epiderme e anexos (pelos, unhas, glândulas sebáceas e sudoríparas)</li><li>• Sistema nervoso</li></ul> <p>(Tecido epitelial) (Tecido nervoso)</p>	<ul style="list-style-type: none"><li>• Derme</li><li>• Sistema muscular</li><li>• Sistema Esquelético</li><li>• Sistema Cardiovascular</li><li>• Sistema Urogenital</li></ul> <p>(Tecidos conjuntivos) (Tecido epitelial) (Tecido muscular)</p>	<ul style="list-style-type: none"><li>• Revestimento interno do <i>sistema digestório</i> e anexos (glândulas salivares, fígado, pâncreas)</li><li>• Sistema respiratório</li><li>• Revestimento interno da bexiga</li></ul> <p>(Tecido epitelial)</p>

